

# Hercules Hatches

**Hercules**  
HATCHES

The unique design of the locking mechanism and the quality of construction place Hercules Cast Hatches in a class of their own.

[Download Assembly Data and Sizes](#)

## Strength

As the name suggest Hercules Hatches are very strong.

The hatch cover and flange ring are cast from corrosion resistant marine grade aluminium, with deep section webs on the underside to prevent distortion under load

## Durability

All moving parts are engineered from type 316 marine grade stainless steel. All components are made to exacting standards and proportioned with strength and reliability in mind.

The bushes and bearings fitted to Hercules Hatches are manufactured from hard wearing Ertalyte, with replacements being readily available and easily fitted. In fact anything that might wear is easily and inexpensively replaceable, so a Hercules Hatch will last as long as the vessel itself.

## Water Resistance

Hercules Hatches offer exceptional waterproof integrity for a deck hatch.

Hercules Hatches have a fuel and chemical resistant neoprene sealing ring fitted to the underside of the cover giving maximum protection against damage.

## Ease of Operation

The unique Hercules locking mechanism utilites large diameter stainless steel shooting bolts which engage in Ertalyte bushes within the frame. This mechanism makes the Hercules Hatch exceptionally smooth in operation.

On deck the hatch is opened and closed using a recessed handle which is lifted and turned through 90 degrees. Below deck it is operated by a hand wheel.

## Safety

The locking mechanism is precisely engineered for strength and security. Once the shooting bolts are engaged, the hatch cannot be accidentally opened.

Hercules Hatches are designed to withstand years of punishment in the harshest of marine environments. The full cast assembly range have BV type approval.



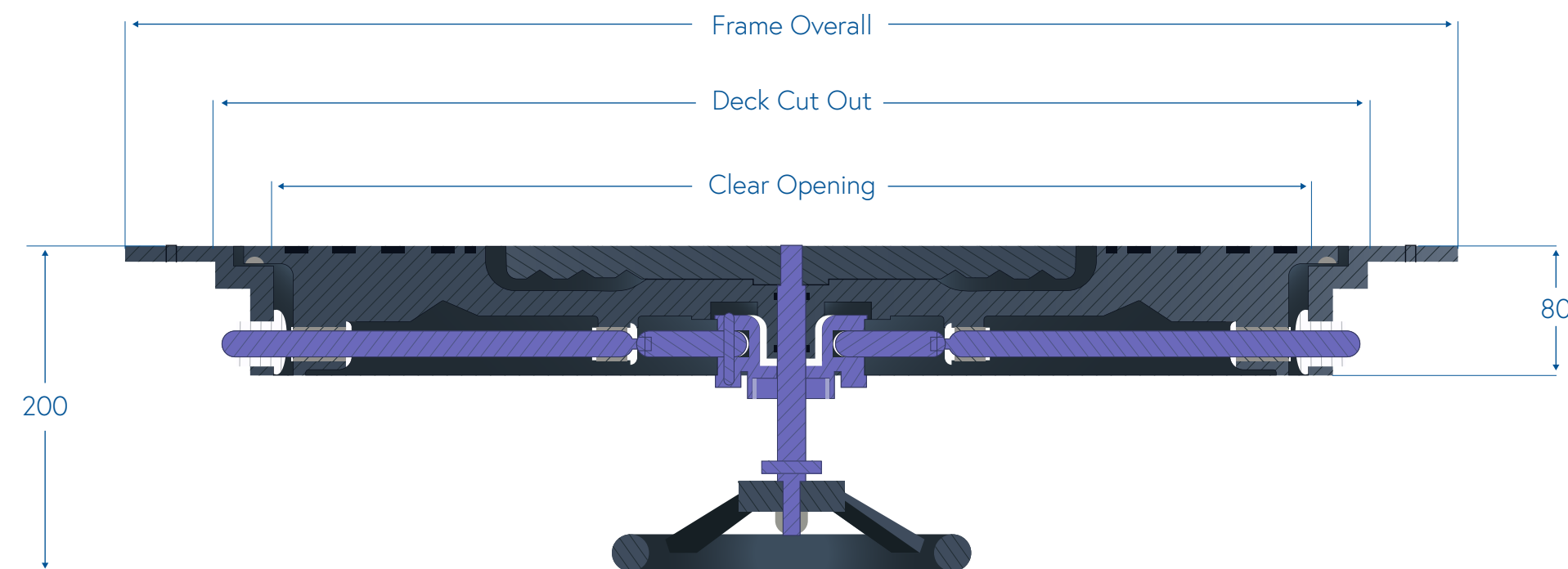
## Accessories

Hinges can be fitted to allow Hercules Cast Hatches to open and fold back flat on the deck or to provide a door in bulkheads. For extra security whilst in port, Hercules Hatches can be locked from below deck by using a simple sprung stainless steel clip on the bolt mechanism.







[3D Download](#)

[Download BV certificate](#)

[Download Care and Maintenance datasheet](#)



## Assembly Data & Sizes

DWF Download						
Type	15	2020	2424	2515	2828	3628
Clear Opening	Ø380	510 × 510	620 × 620	640 × 380	710 × 710	915 × 710
Deck Cut Out	Ø460	590 × 590	700 × 700	715 × 460	795 × 795	1005 × 800
Deck Cut Out Radius	R230	R130	R145	R230	R142	R150
Frame Overall	Ø570	660 × 660	810 × 810	820 × 570	900 × 900	1110 × 900
Fixing Details	12 × M6	16 × M6	24 × M6	20 × M6	20 × M6	22 × M6
Overall Weight	16KG	25KG	30KG	23KG	42KG	52KG