

Hercules Watertight Hatches

Hercules cast deck hatches are available from stock in a range of sizes. The unique locking mechanism design and quality of construction place Hercules hatches in a class of their own!

Kort are the sole worldwide sales distributor for Hercules Hatches and it is pleasing to see year on year sales increasing through new and existing customers. Repeat business is a large proportion of Hercules sales which shows product quality and reliability.

Materials

Hatch covers and flange rings are cast from high tensile, corrosion resistant marine grade aluminium with deep section webs on the underside to prevent distortion under load. All moving parts are engineered from type 316 stainless steel. The unique Hercules locking mechanism utilises stainless steel shooting bolts which engage in replaceable Nylatron bushes within the flange ring. A full range of spare parts is always available from stock.

Testing and Water Resistance

Hercules hatches have been tested and found watertight at pressures equivalent to a depth of 25 metres, offering exceptional watertight integrity. Every hatch has a fuel and chemical resistant neoprene sealing ring fitted to the underside of the hatch cover giving maximum protection against damage. Hercules hatches have been fitted with the approval of all major classification societies and have Bureau Veritas Type approval.

Hercules Specialist Engineering Services

Hercules have the flexibility to design and manufacture a number of marine components from fabrications in steel or aluminium to machined components in a range of materials, for example, titanium. High quality stainless steel fittings can be produced for specific requirements.

Applications

The Hercules hatch range of sizes allows use in a number of roles. The type 15 as an ice hatch. The type 2515 and 2424 as access hatches. The type 2020 is designed as an access hatch with lighter scantlings for pleasure craft and the RNLI. The larger 2828 and 3828 are suitable for fishing vessels where fish boxes need to be stowed below deck.

Other applications have included pontoons and offshore where compartments need to have intermittent access. Hercules can provide a bespoke solution for your project.

Hercules hatches are supplied with a flange ring suitable for bolting into the deck with M6 or M8 bolts. The flange should be sealed with mastic for grp or wooden vessels. For steel vessels we can supply the aluminium flange with a bolted steel flange ring to enable this to be welded to the steel deck. Stainless steel hinges are an optional extra for all sizes of Hercules hatch.



Kort Propulsion Co Ltd
Bank Chambers
70 Pier Road · Erith · Kent
DA8 1TA
Telephone
+ 44 (0) 1322 346346
Fax
+ 44 (0) 1322 347346
email
info@kortpropulsion.com
www.kortpropulsion.com



Made-to-measure hatches

Hercules made to measure hatches are designed to suit individual requirements. They can be fitted into all types of deck and made to suit any rectangular or square aperture.

The flange ring is fabricated from a marine grade aluminum extrusion.

The hatch cover is 6 mm marine grade aluminum tread-plate, reinforced with fabricated sub frame and secured to the flange ring by a unique system of captive bolts.

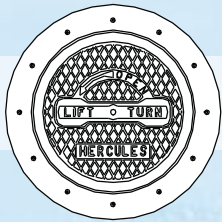
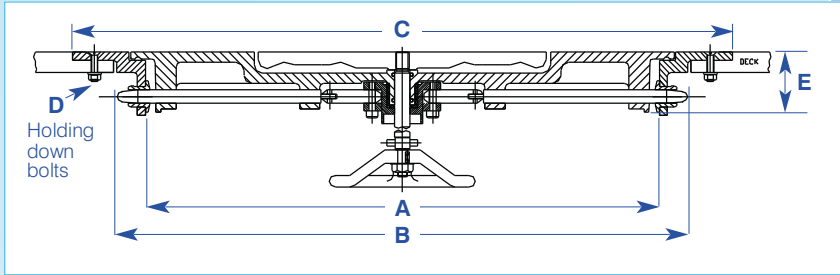
It has a rolled edge giving the neoprene seal maximum protection against damage.

Hinges can be fitted allowing the hatches to fold back flat to the deck or provide a watertight door in bulkheads.

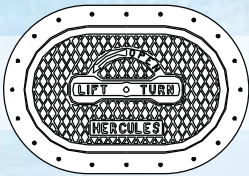
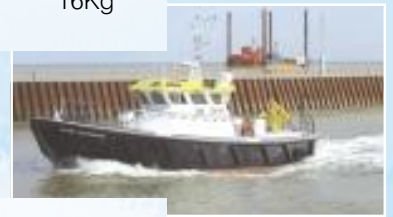
Hercules made to measure hatches offer total flexibility without compromising strength, durability, water resistance or safety.

Hydraulic services and testing can be carried out on site and in conjunction with associated Company Hercules Hydraulics.

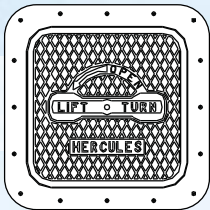
Hercules Watertight Hatches - Cast Aluminium Range



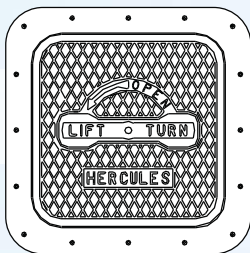
Type	A	B	C	D	E	Weight
15	380 Dia	460 Dia	570 Dia	12 x M6	75	16Kg



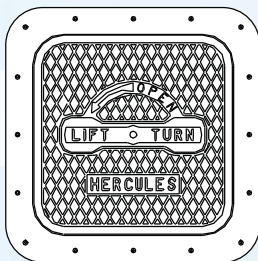
2515	640 x 380	710 x 460	820 x 570	20 x M6	80	23Kg
-------------	-----------	-----------	-----------	---------	----	------



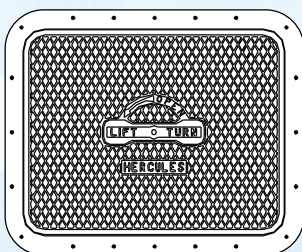
2020	510 x 510	590 x 590	660 x 660	16 x M6	80	18Kg
-------------	-----------	-----------	-----------	---------	----	------



2424	620 x 620	700 x 700	810 x 810	24 x M6	80	30Kg
-------------	-----------	-----------	-----------	---------	----	------



2828	710 x 710	790 x 790	900 x 900	20 x M6	80	42Kg
-------------	-----------	-----------	-----------	---------	----	------



3628	915 x 710	1000 x 790	1110 x 900	22 x M8	80	52Kg
-------------	-----------	------------	------------	---------	----	------

Hercules

HATCHES

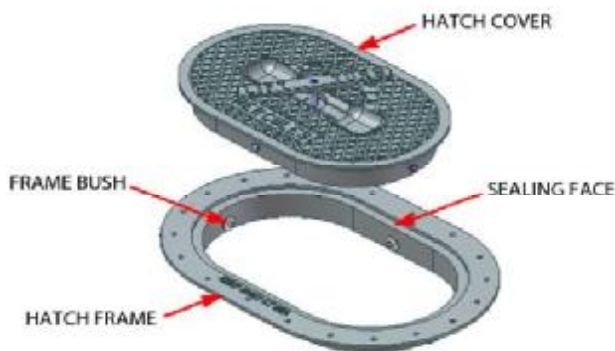
**Nelson Road Industrial Estate,
Dartmouth, Devon, TQ6 9LA.
Tel: +44 (0) 1803 833 736
Fax: +44 (0) 1803 834 846
Email: Info@Hercules.org.uk**

Cast Deck Hatch Care and Maintenance.

Hercules Cast Deck Hatches are manufactured to the highest standard from carefully selected materials. Hatch covers and frames are cast from high tensile, corrosion resistant marine grade Aluminium.

All moving parts are engineered from 316 Stainless Steel. The unique Hercules locking mechanism utilises Stainless Steel shooting bolts which engage in replaceable Ertalyte bushes. Hercules Hatches have been designed to withstand the toughest of marine environments, however, to ensure that your hatch performs at its best, for the longest possible service life.....

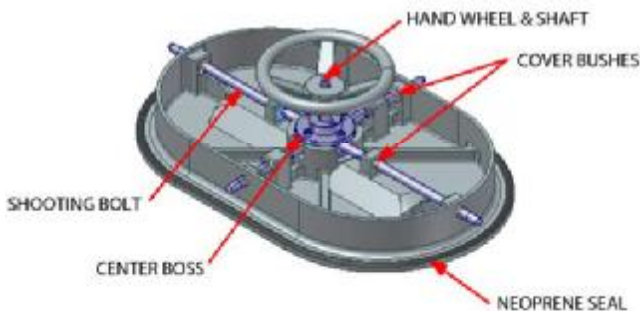
IT IS ESSENTIAL TO CONDUCT REGULAR MAINTENANCE.



Hatch Frame

- Remove the Hatch Cover from the Frame.
- Prepare hot soapy water & a stiff hand brush.
- Thoroughly clean the frame, removing any dirt and chalky deposits.
- Thoroughly clean the sealing face, ensure not to damage the surface.
- Clean the four frame bushes. If necessary use boiling water to remove any compacted deposits.

- **Do not use any corrosive chemicals.**
- **Do not use any power tools.**



Hatch Cover

- Repeat the cleaning process outlined above.
- Carefully clean the neoprene seal, use a rag only and ensure no damage or distortion occurs.
- Clean and degrease and dry all moving components: Shooting Bolts, Center Boss, Handle Shaft & linkages.
- Using the grease supplied with the Hercules Hatch, apply to the shaft and all pivot points.

- **Do not apply any grease to the bushes.**
- **Do not use any corrosive chemicals.**
- **Do not use any power tools.**

Regular maintenance as outlined above will drastically improve the longevity and lasting performance of your Hercules Hatch.

After time and use it may become necessary to replace the Neoprene Seal and the Ertalyte Bushes. This is a relatively simple procedure and can be completed by the user.

Seal replacement kits and hatch reconditioning kits are available through mail order from our distributor Kort Propulsion:
Tel: +44 (0) 1322 346346 or Email: info@kortpropulsion.com.

If your hatch has been neglected for a long period of time, or has sustained physical damage, it is usually possible to overhaul and replace any damaged components at our factory, depending on the damage done.